

THE UNIVERSITY OF TEXAS AT AUSTIN DELL MEDICAL SCHOOL - PHASE 1

Jim Shackelford, Senior Project Manager, Facilities Planning and Construction

June 16, 2016

AGENDA

- Campus Master Plan
- Medical District Plan
- Project Execution – Phase 1
 - » Stage A - Site Preparation/Infrastructure
 - » Stage B - Research Building (Health Discovery Building)
 - » Stages C & E - Medical Office Building 1 (Health Transformation Building)
& Parking Garage 1 (Health Center Garage)
 - » Stage D - Education and Administration Building (Health Learning Building)
- Q&A



BUDGET

- Stage A - Site Preparation/Infrastructure - \$77,644,683
- Stage B - Research Building - \$154,527,510
- Stages C & E - Medical Office Building 1
(MOB) & Parking Garage 1 - \$157,483,758
- Stage D - Education and
Administration Building - \$46,741,049
- TOTAL PROJECT COST - \$436,397,000



THE UNIVERSITY OF TEXAS AT AUSTIN CAMPUS MASTER PLAN



The University of Texas System Administration
Office of Facilities Planning and Construction

CAMPUS MASTER PLAN






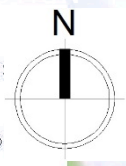
CORE

CENTRAL

EAST

CAMPUS ZONES

- UT AUSTIN CAMPUS**
-  FUTURE BUILDING OPPORTUNITIES
 -  EXISTING BUILDINGS
 -  UT AUSTIN MAIN CAMPUS BOUND



THE UNIVERSITY OF TEXAS AT AUSTIN MEDICAL DISTRICT MASTER PLAN



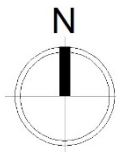
MEDICAL DISTRICT MASTER PLAN



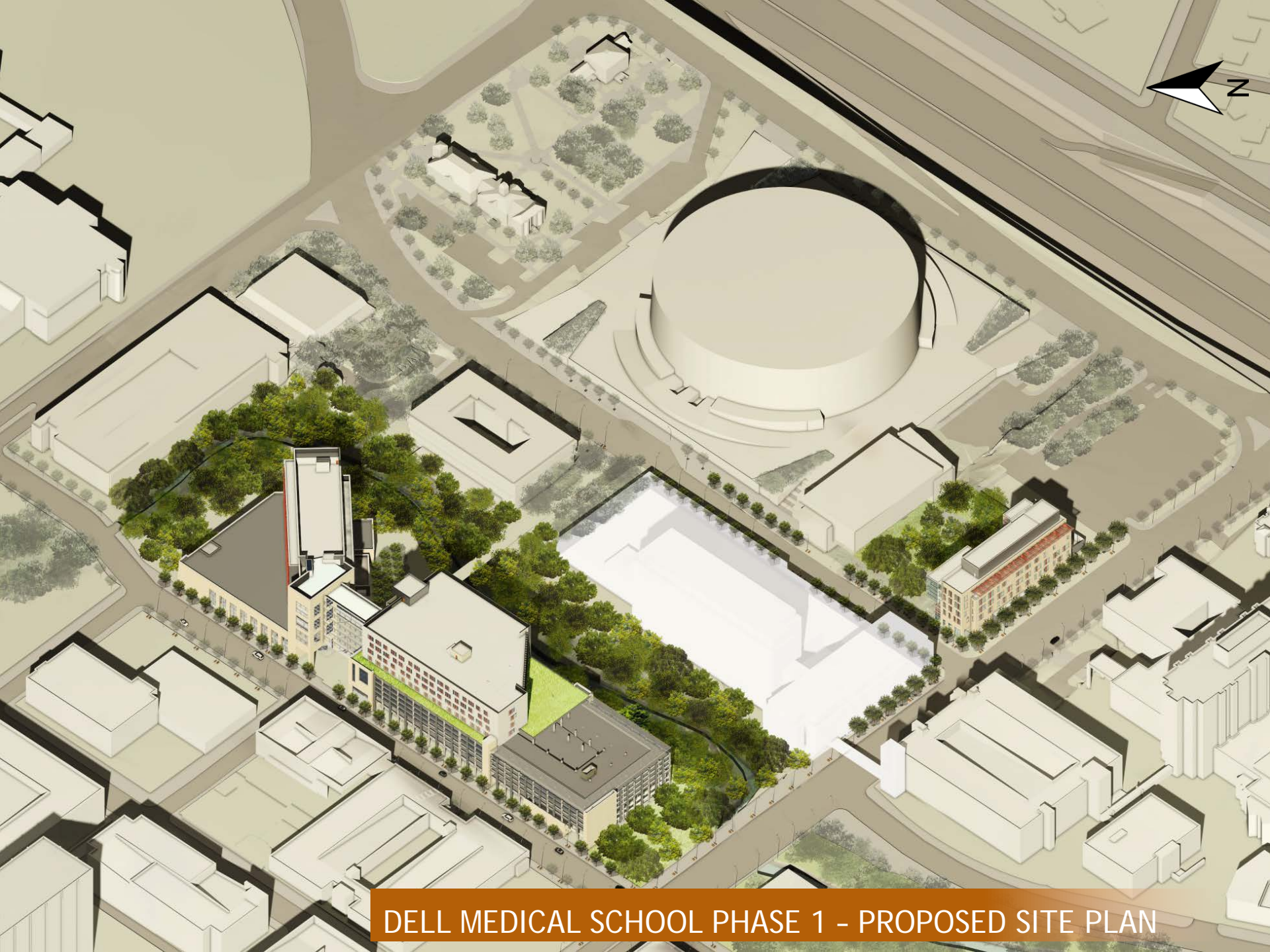
— UT AUSTIN
CAMPUS BOUNDARY

- - - MEDICAL DISTRICT
PLANNING BOUNDARY





DELL MEDICAL SCHOOL PHASE 1 - PROPOSED SITE PLAN



DELL MEDICAL SCHOOL PHASE 1 - PROPOSED SITE PLAN



DELL MEDICAL SCHOOL PHASE 1 - AERIAL PHOTO

DELL MEDICAL SCHOOL - PHASE 1, STAGE A

SITE PREPARATION AND INFRASTRUCTURE



STAGE A – SITE PREPARATION AND INFRASTRUCTURE

SCOPE & BUDGET

- Red River Realignment and Seton Site Preparation
- Medical District Utility Infrastructure
- Utility Infrastructure North of MLK
- City of Austin Service Extensions
- Tennis Center Demolition
- Bridge Replacement
 - – 17th Street Waller Creek Crossing
 - – 18th Street Waller Creek Crossing
- Tree Relocation
- Medical District Landscape/Hardscape & Waller Creek Stabilization

Total Project Cost \$77,644,683

SCOPE & BUDGET





RED RIVER RE-ALIGNMENT

STAGE A – SITE PREPARATION AND INFRASTRUCTURE

CONSTRUCTION PROGRESS

- Red River Realignment and Seton Site Preparation
 - Seton Site preparation completed
 - Red River realignment completed
- Medical District Utility Infrastructure completed
- Utility Infrastructure North of MLK completed
- City of Austin Service Extensions completed
- Tennis Center Demolition - completed
- Bridge Replacement – existing bridges removed; new bridges completed
- Tree Relocation – completed
- Medical District Landscape/Hardscape & Waller Creek Stabilization – on schedule

PROGRESS





The University of Texas System Administration
Office of Facilities Planning and Construction

Panorama of Seton Teaching Hospital Site



The University of Texas at Austin - Dell Medical School - Stage A - Site Preparation & Infrastructure
Camera 1 June 23 2014 15:00:23



The University of Texas System Administration
Office of Facilities Planning and Construction

Red River Street Realignment – View from the north



The University of Texas at Austin - Dell Medical School - Stage A - Site Preparation & Infrastructure
Camera 3 - July 10 2014 11:30:57



The University of Texas System Administration
Office of Facilities Planning and Construction

**Demolition of Tennis Center –
View from the north**



The University of Texas System Administration
Office of Facilities Planning and Construction

Demolition of Tennis Center – View from the north



The University of Texas System Administration
Office of Facilities Planning and Construction

**Tree Relocation –
View from the north**



The University of Texas System Administration
Office of Facilities Planning and Construction

**New Red River Street –
View from the north**

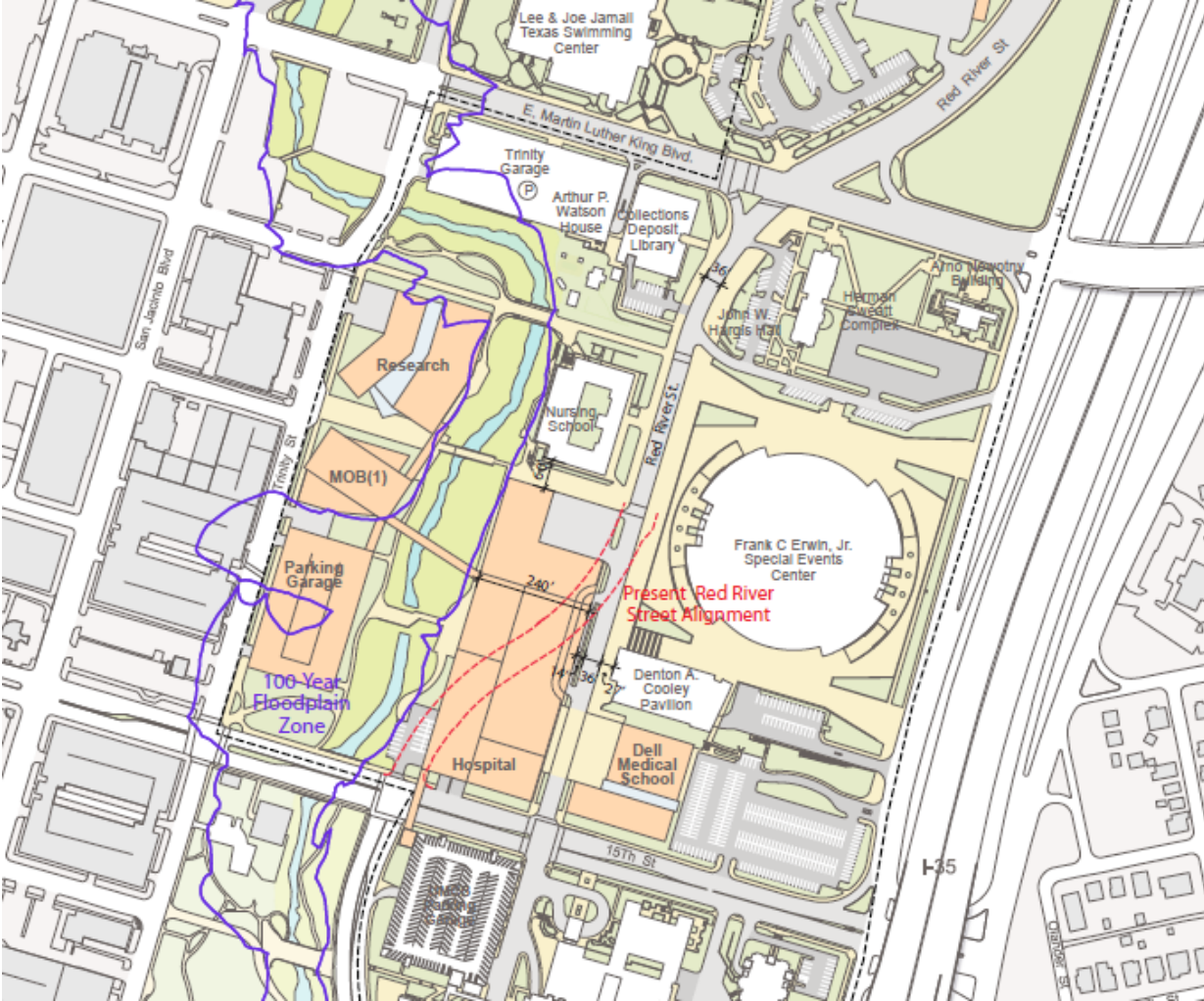


The University of Texas System Administration
Office of Facilities Planning and Construction

**New Red River Street –
View from the south**

DESIGN CHALLENGES





WALLER CREEK FLOOD PLAIN



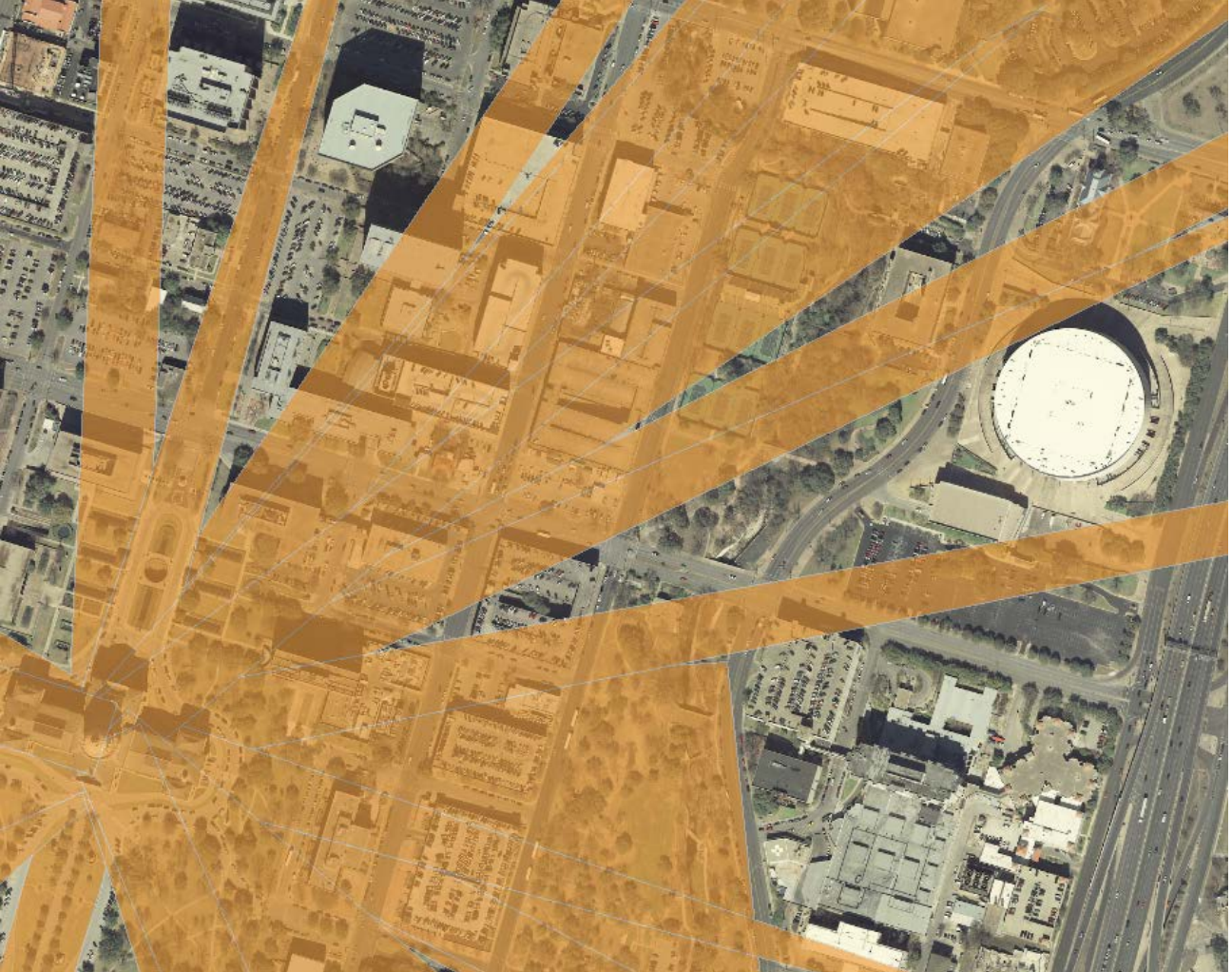
The University of Texas System Administration
Office of Facilities Planning and Construction

Five View Corridors impact the Dell
Medical School District: 13, 23, 24, 25, 30



CAPITOL VIEW CORRIDORS





CAPITOL VIEW CORRIDORS

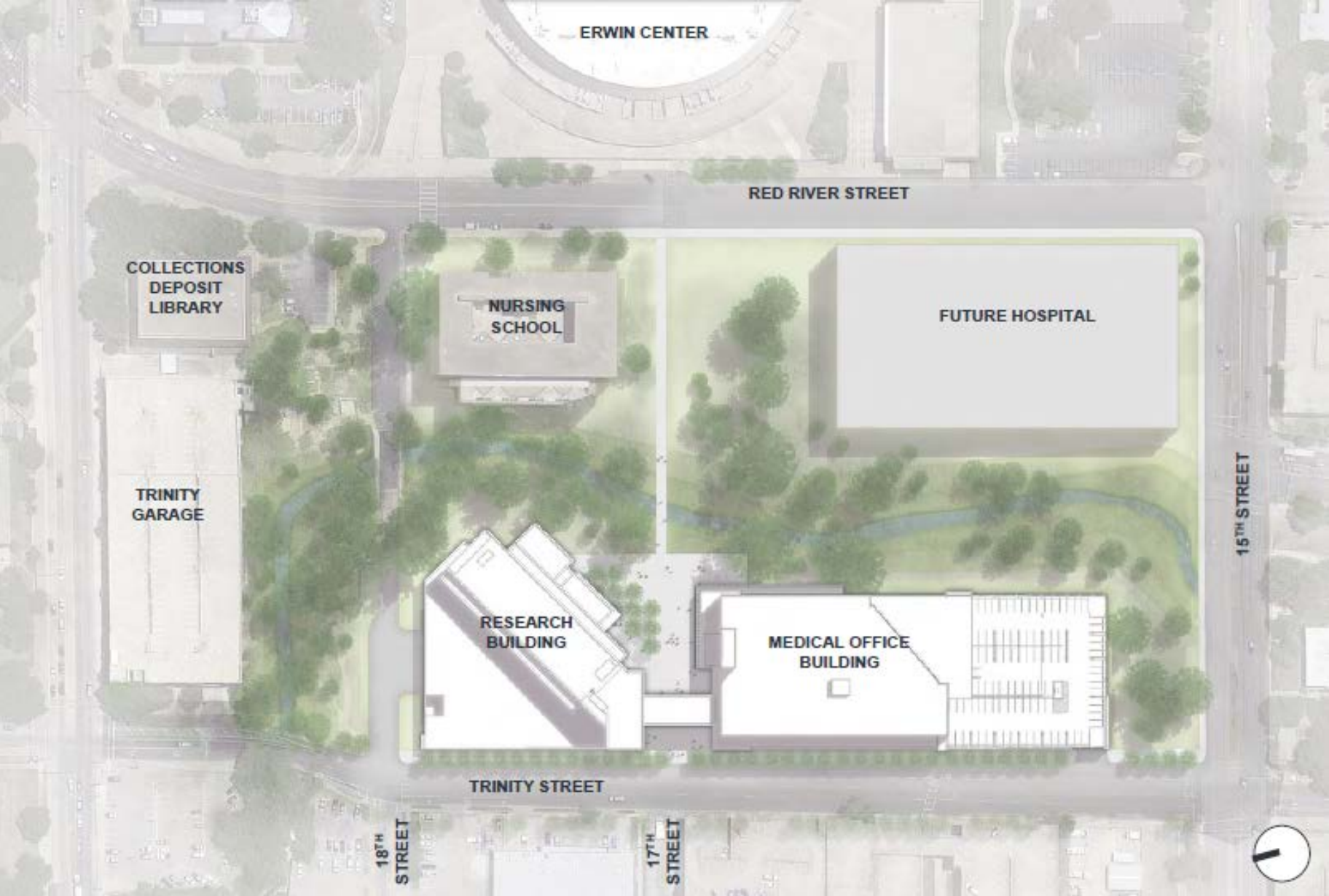


The University of Texas System Administration
Office of Facilities Planning and Construction

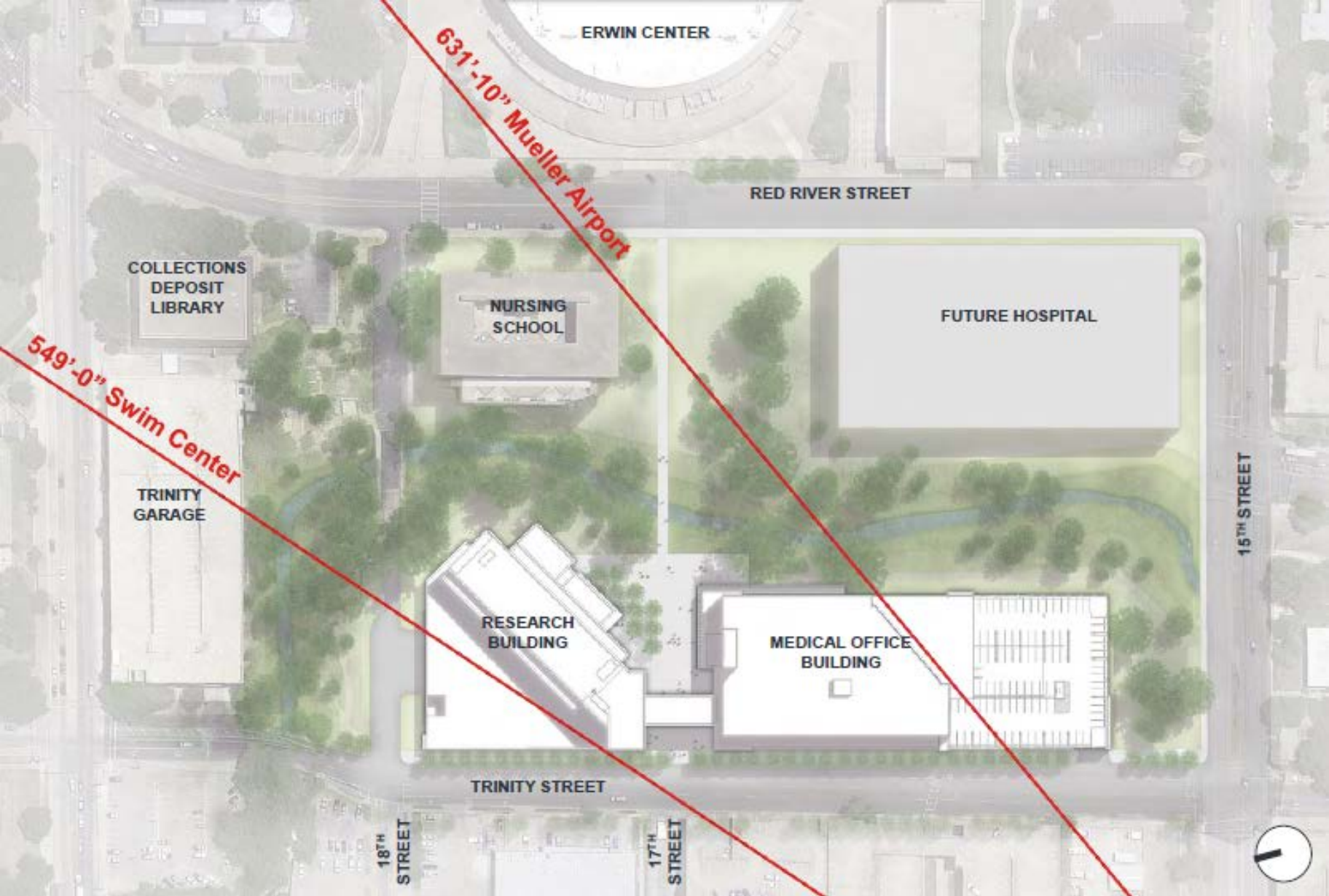
DELL MEDICAL SCHOOL - PHASE 1, STAGE B

HEALTH DISCOVERY BUILDING

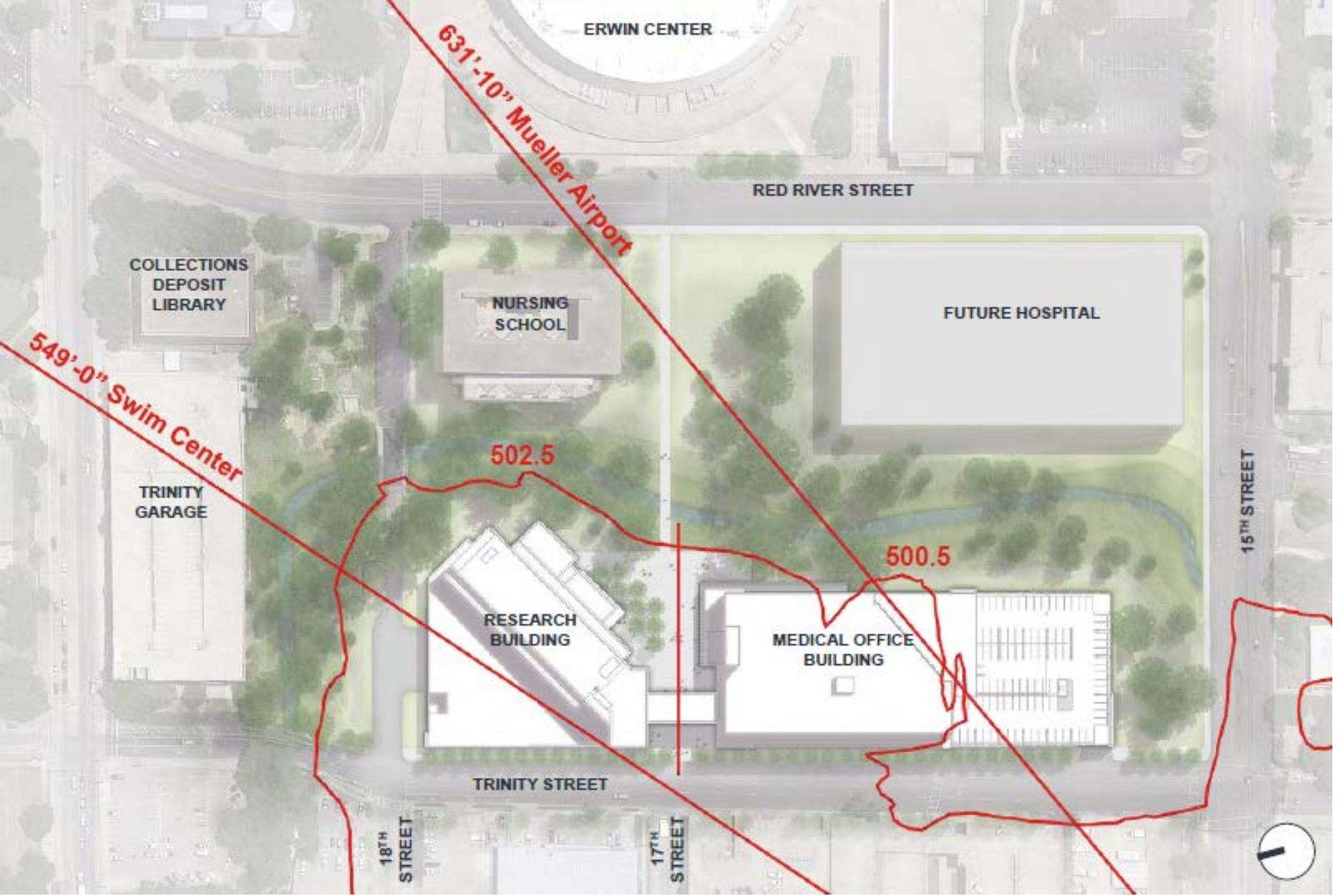




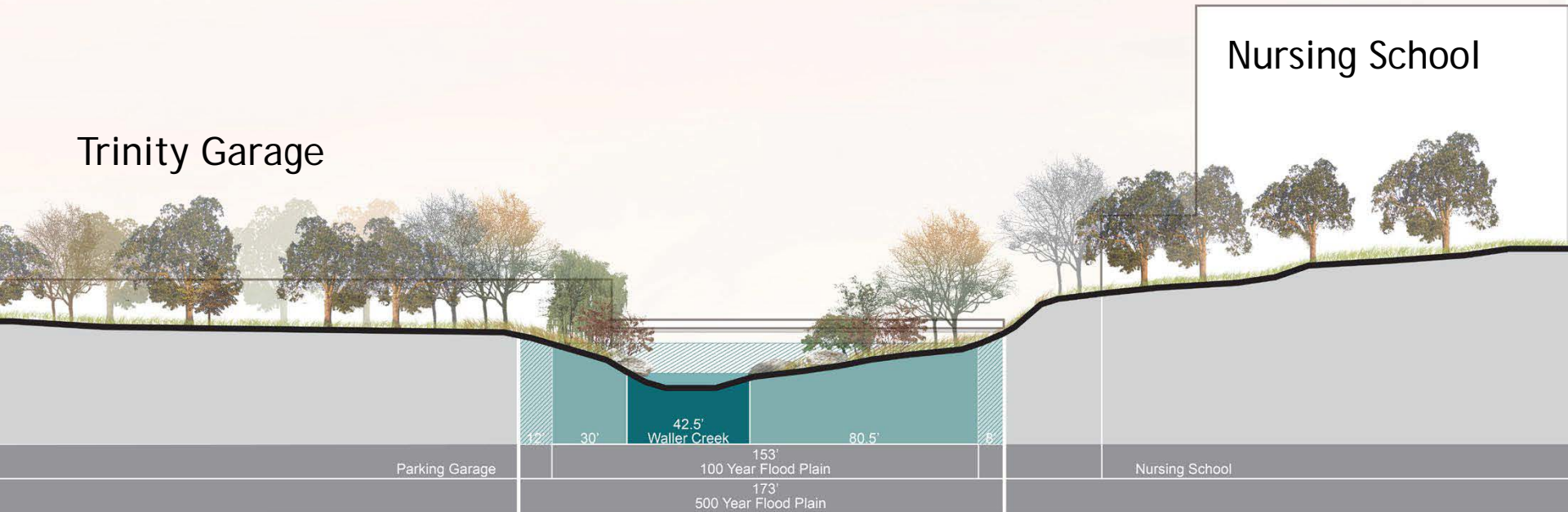
RESEARCH BUILDING & MOB 1 SITE PLAN



SITE CONSTRAINTS - VIEW CORRIDORS



SITE CONSTRAINTS - FLOOD PLAIN



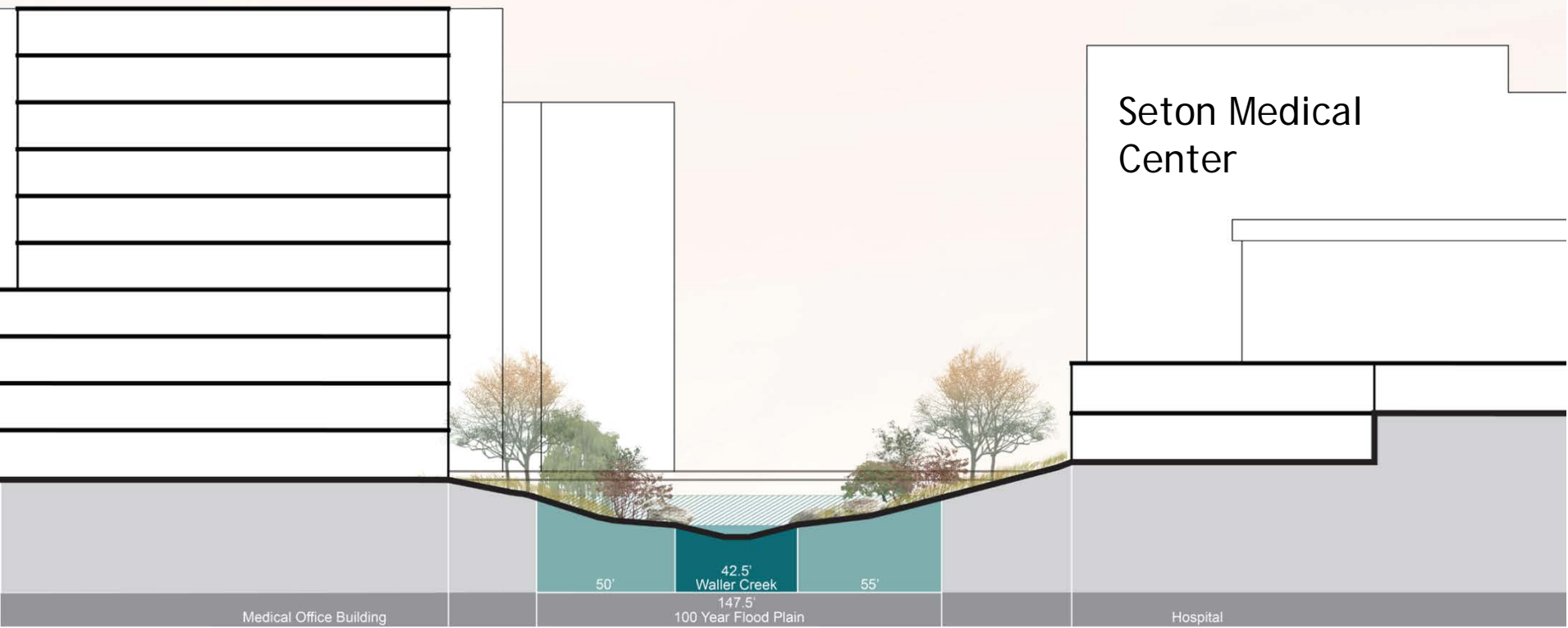
Trinity Garage

Nursing School

EXISTING SECTION THROUGH WALLER CREEK



Medical Office Building 1



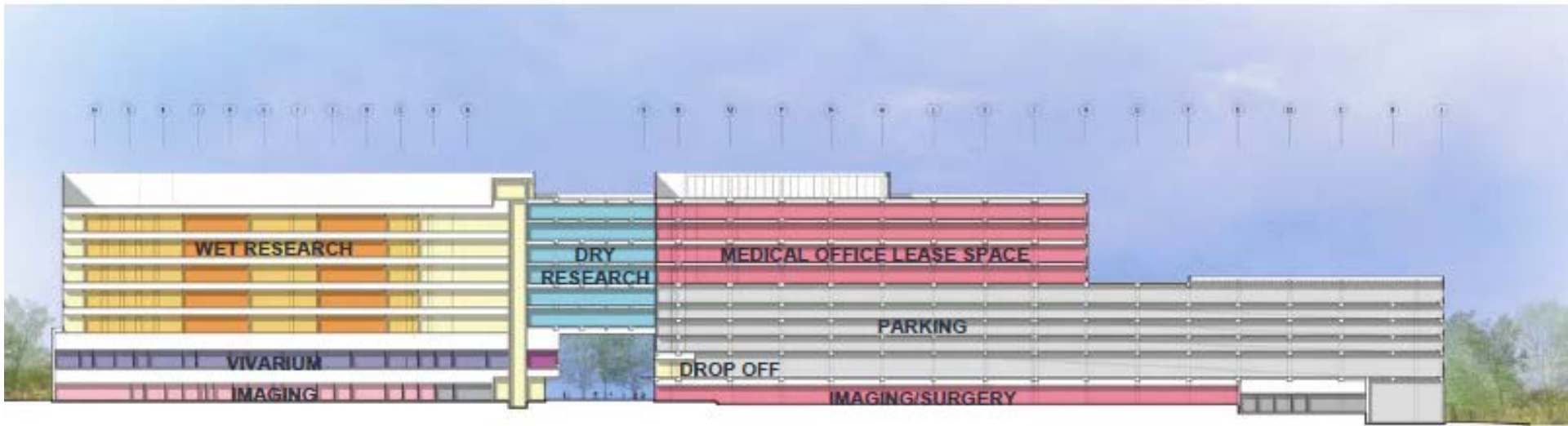
PROPOSED SECTION THROUGH WALLER CREEK



The University of Texas System Administration
Office of Facilities Planning and Construction

Research Building

Medical Office Building 1



SECTION THRU RESEARCH BUILDING & MOB 1



PROPOSED VIEW FROM WALLER CREEK



The University of Texas System Administration
Office of Facilities Planning and Construction



The University of Texas at Austin - Dell Medical School - Stage A - Site Preparation & Infrastructure
Camera 3 - May 23, 2016 10:56:57



The University of Texas System Administration
Office of Facilities Planning and Construction



RESEARCH BUILDING LEVEL 1 BREAKOUT

DELL MEDICAL SCHOOL - PHASE 1, STAGES C & E

HEALTH TRANSFORMATION BUILDING & HEALTH CENTER GARAGE





PROPOSED VIEW FROM WALLER CREEK



VIEW FROM WALLER CREEK



PROPOSED VIEW OF MOB LOBBY

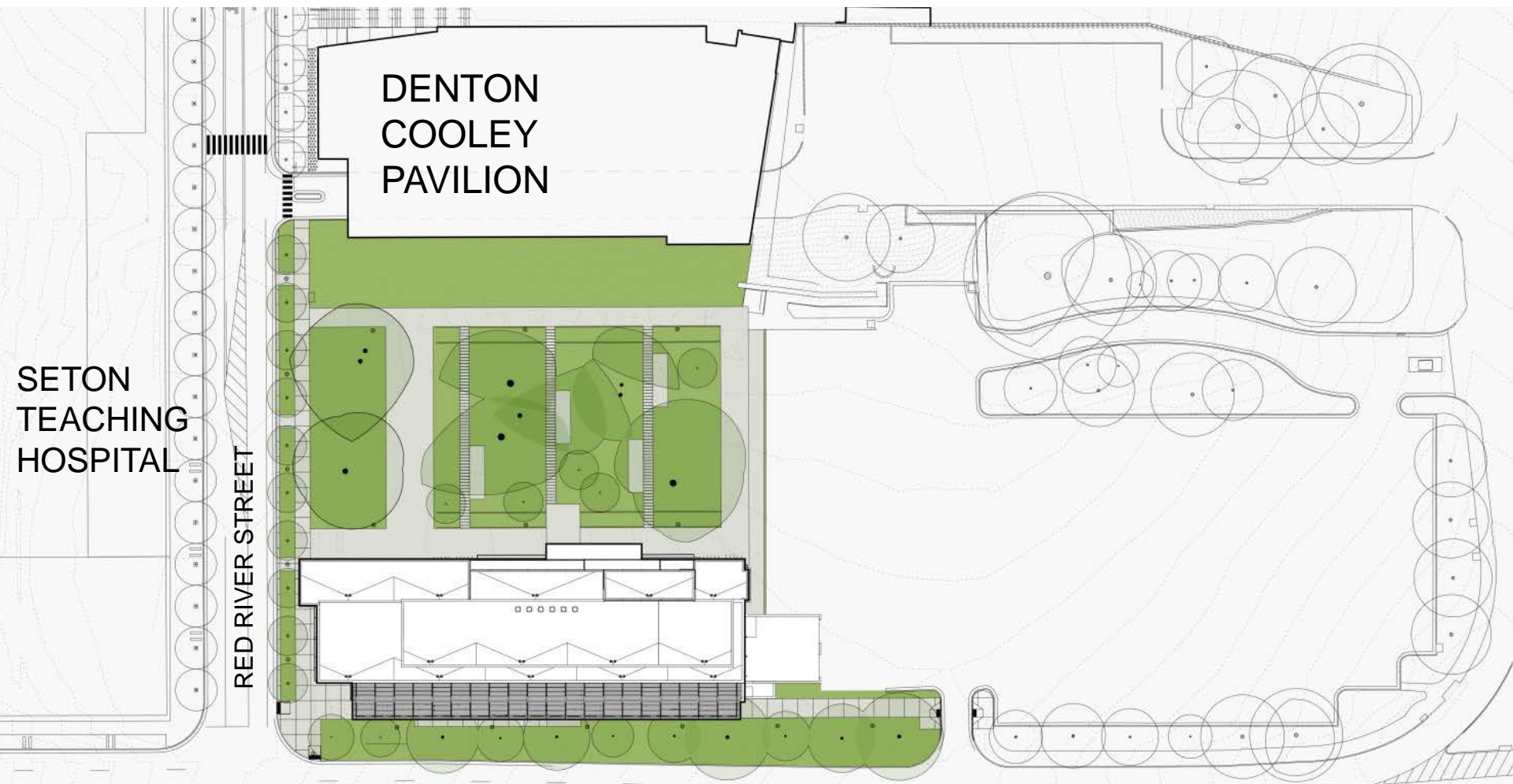


PROPOSED VIEW OF MOB PATIENT DROP-

DELL MEDICAL SCHOOL - PHASE 1, STAGE D

HEALTH LEARNING BUILDING



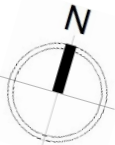


DENTON
COOLEY
PAVILION

SETON
TEACHING
HOSPITAL

RED RIVER STREET

15TH STREET



EDUCATION AND ADMIN. BUILDING SITE PLAN



PROPOSED VIEW OF EDUCATION & ADMINISTRATION BUILDING FROM 15TH STREET



The University of Texas System Administration
Office of Facilities Planning and Construction



PROPOSED VIEW OF EDUCATION AND ADMIN. BLDG FROM NORTH



The University of Texas System Administration
Office of Facilities Planning and Construction



PROPOSED VIEW OF TEAM BASED LEARNING CENTER



EDUCATION AND ADMIN. BLDG INTERIOR VIEW



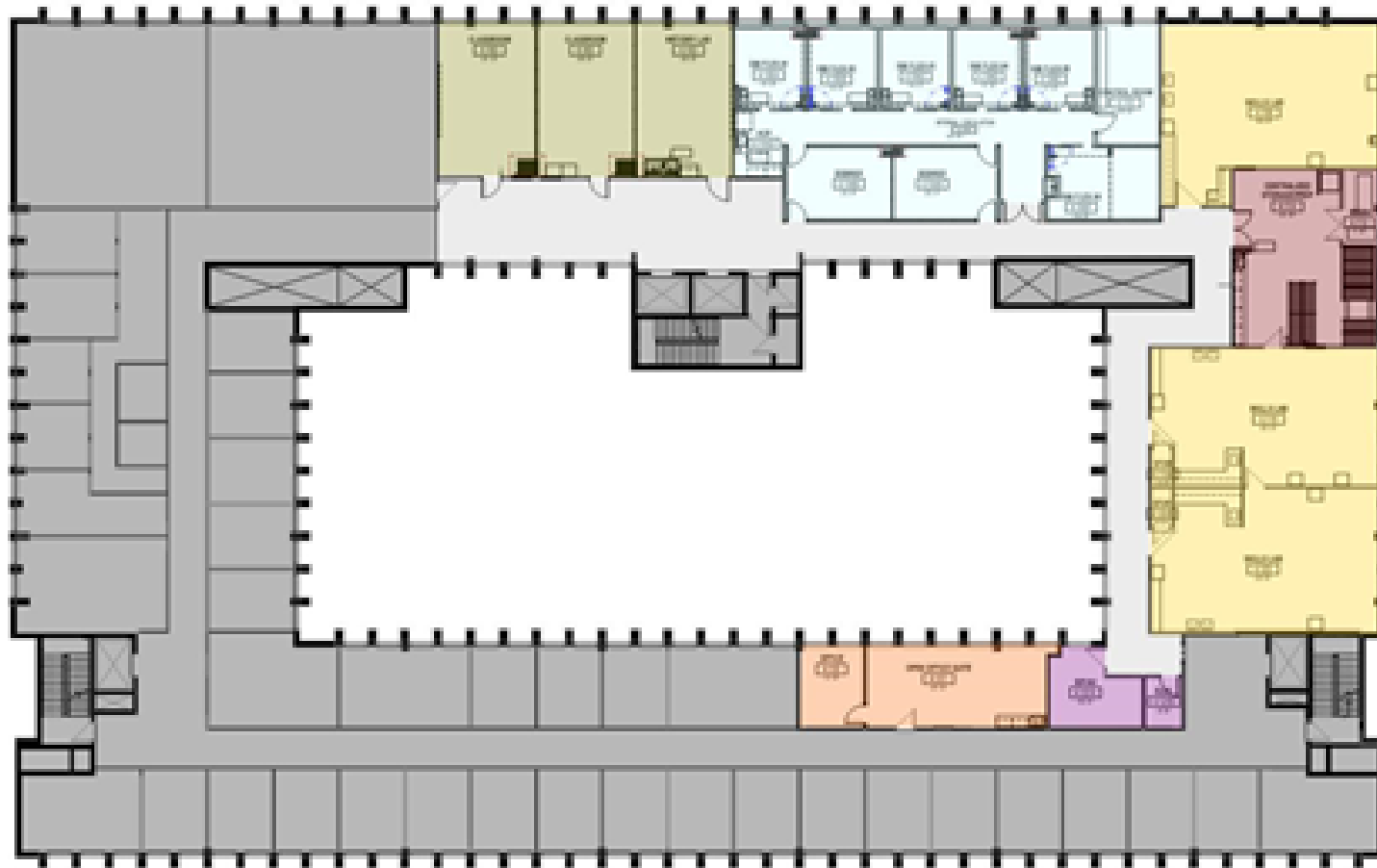
EDUCATION AND ADMIN. BLDG INTERIOR VIEW

DELL MEDICAL SCHOOL - PHASE 1

SCHOOL OF NURSING RENOVATIONS



May 2015 through August 2015



- Classrooms
- SIM Center
- Storage
- Skills Labs
- Offices
- Support Spaces

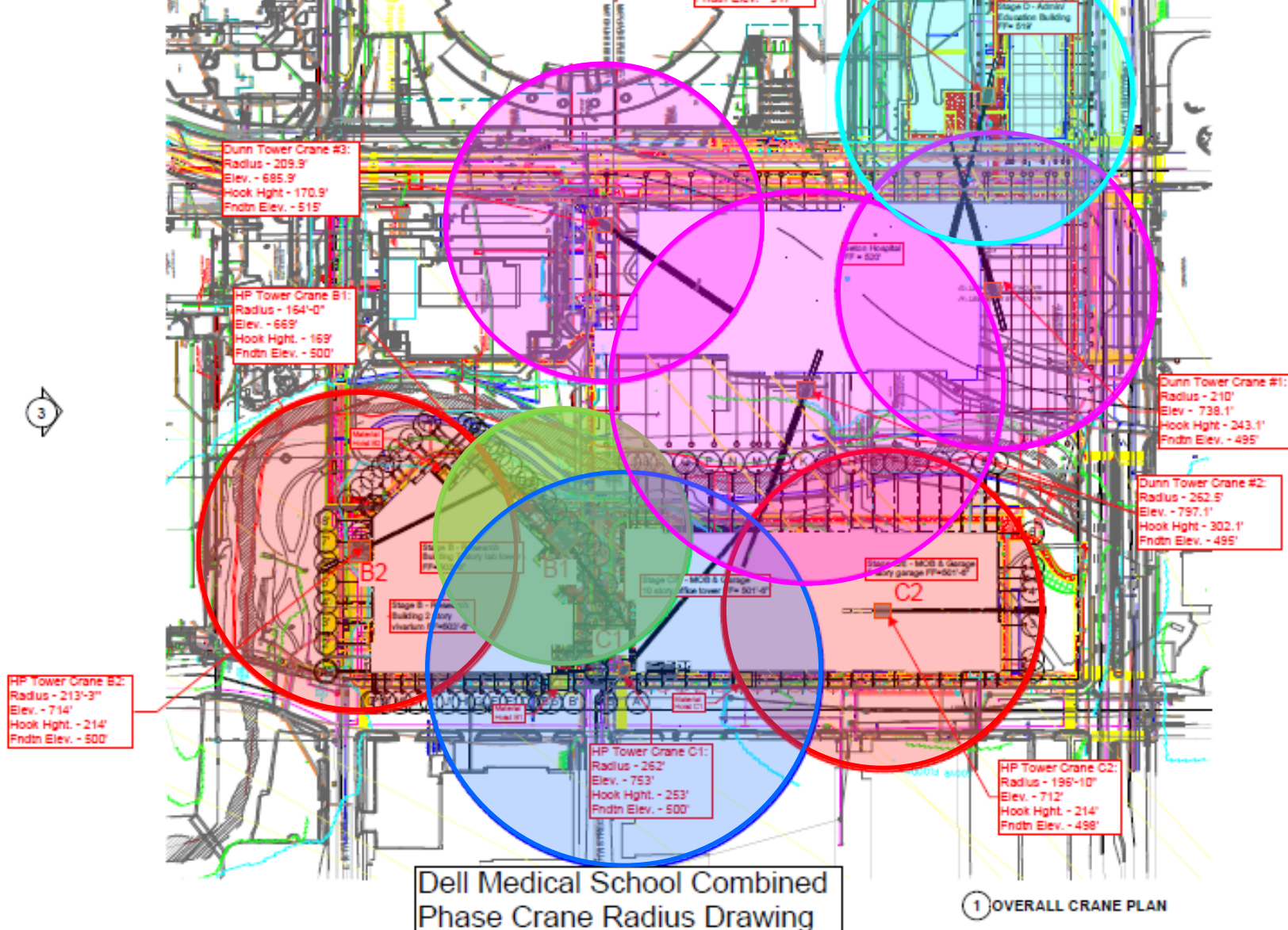
Dell Medical School – Nursing Building Simulation Lab Floor Plan

SCHOOL OF NURSING SIMULATION LABS

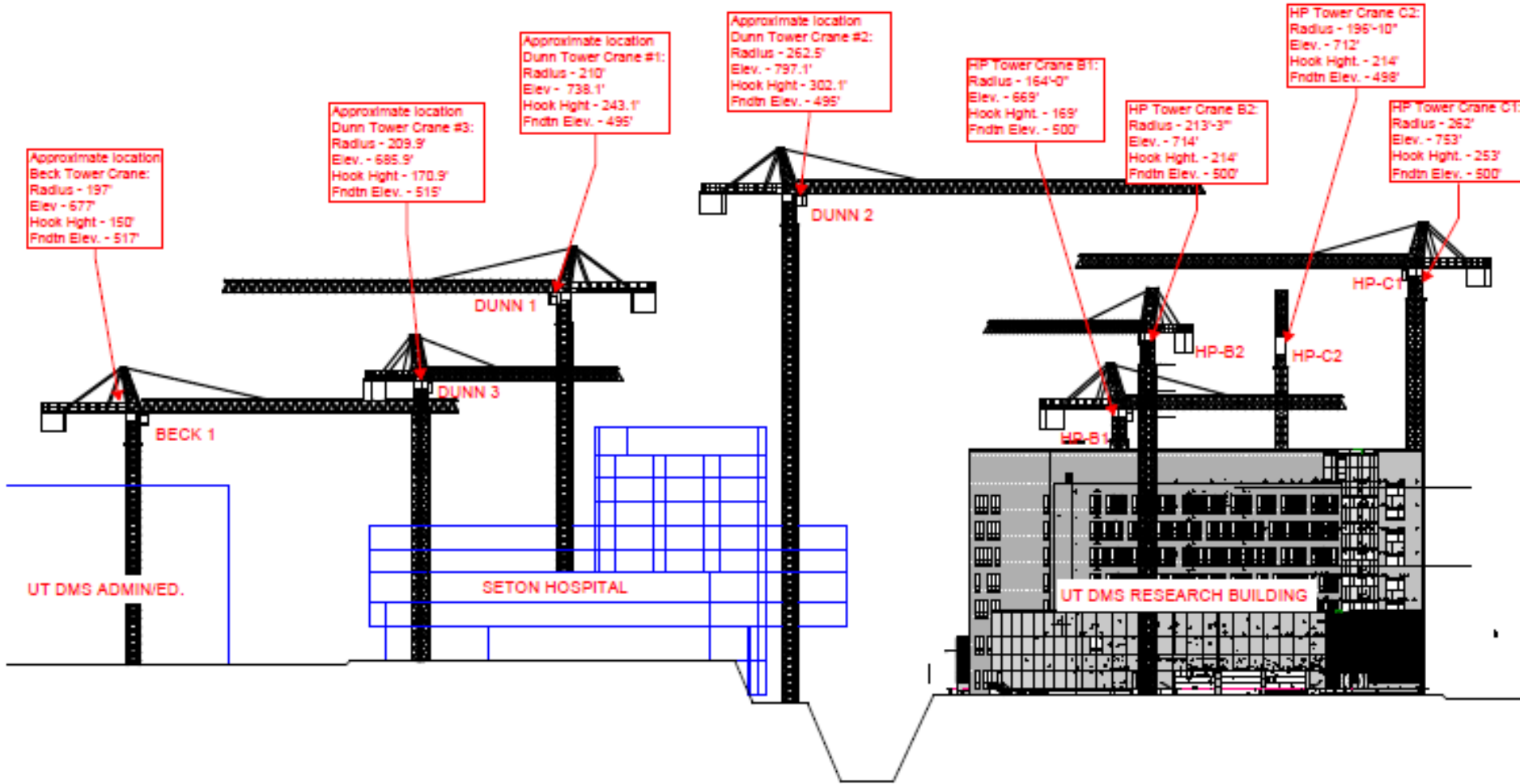
DELL MEDICAL SCHOOL - PHASE 1

CONSTRUCTION COORDINATION





CRANE COORDINATION PLAN



NORTH ELEVATION

CRANE COORDINATION ELEVATION

KEY SUCCESSES AND LESSONS LEARNED

SUCCESSES

- All Contractors Meetings bi-weekly
- Open and Frequent Communication

LESSONS LEARNED

- Involve stakeholders early and often
- Allow time for inevitable changes



QUESTIONS

